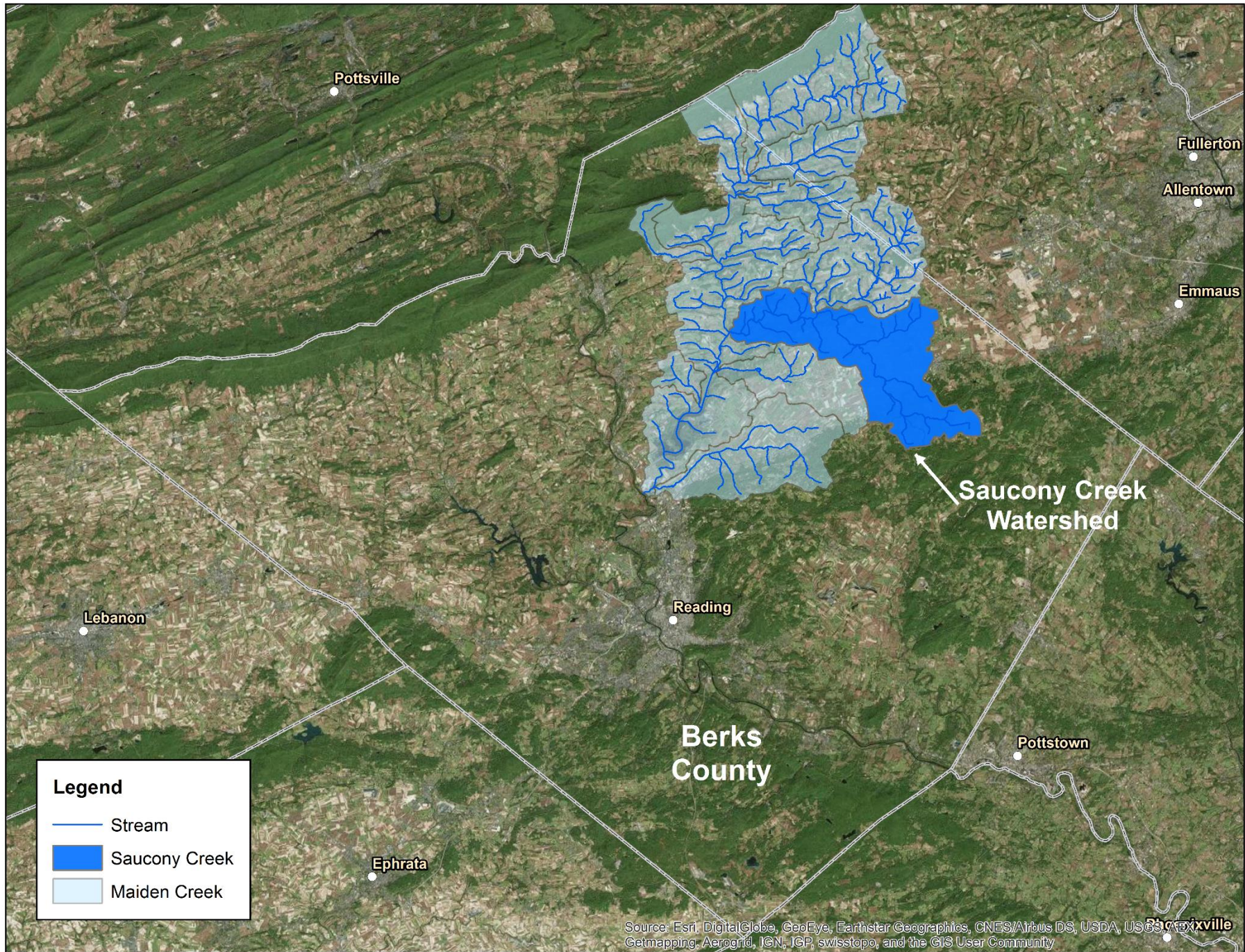
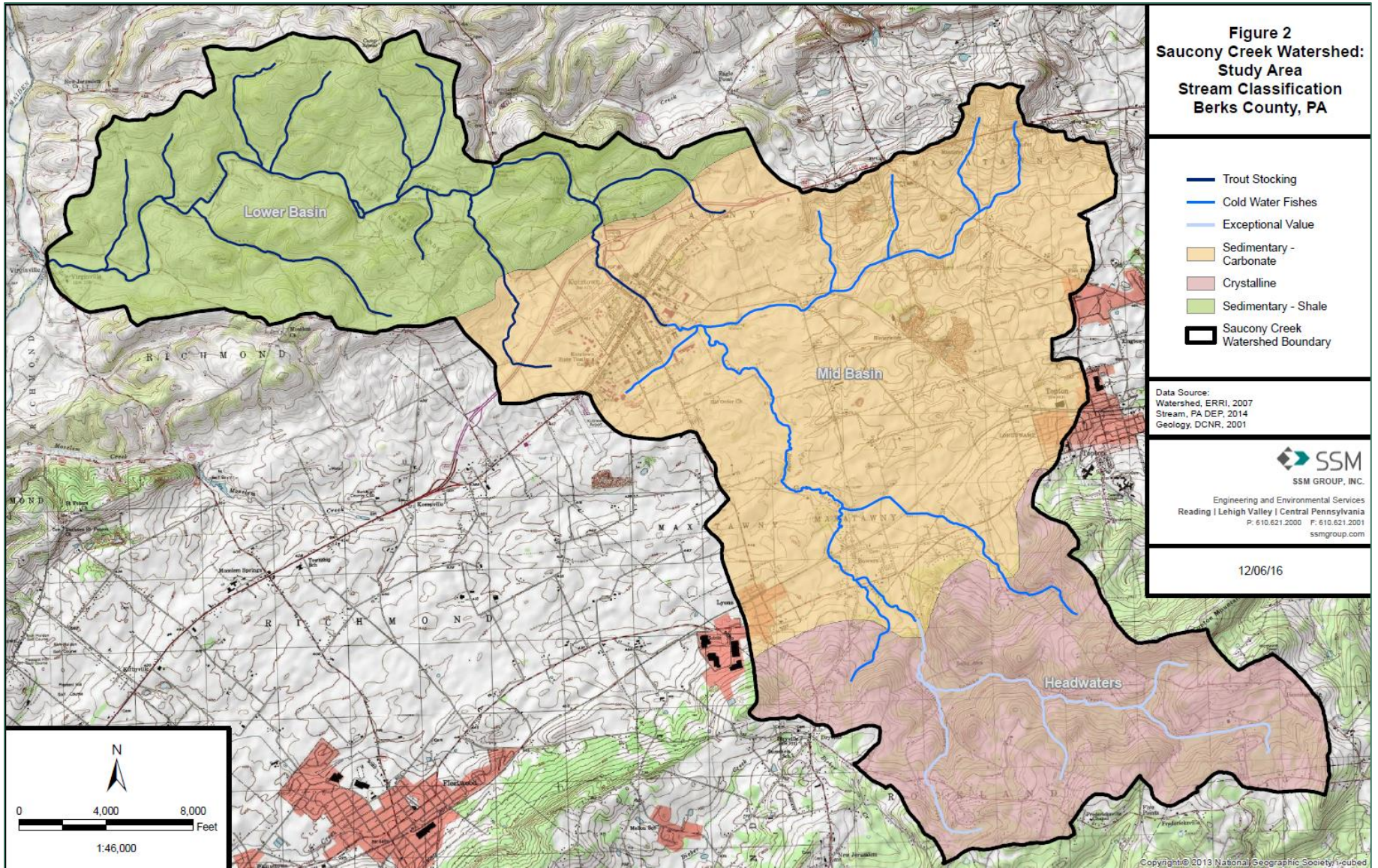




Saucony Creek Success Story

Investing in Source Water Protection





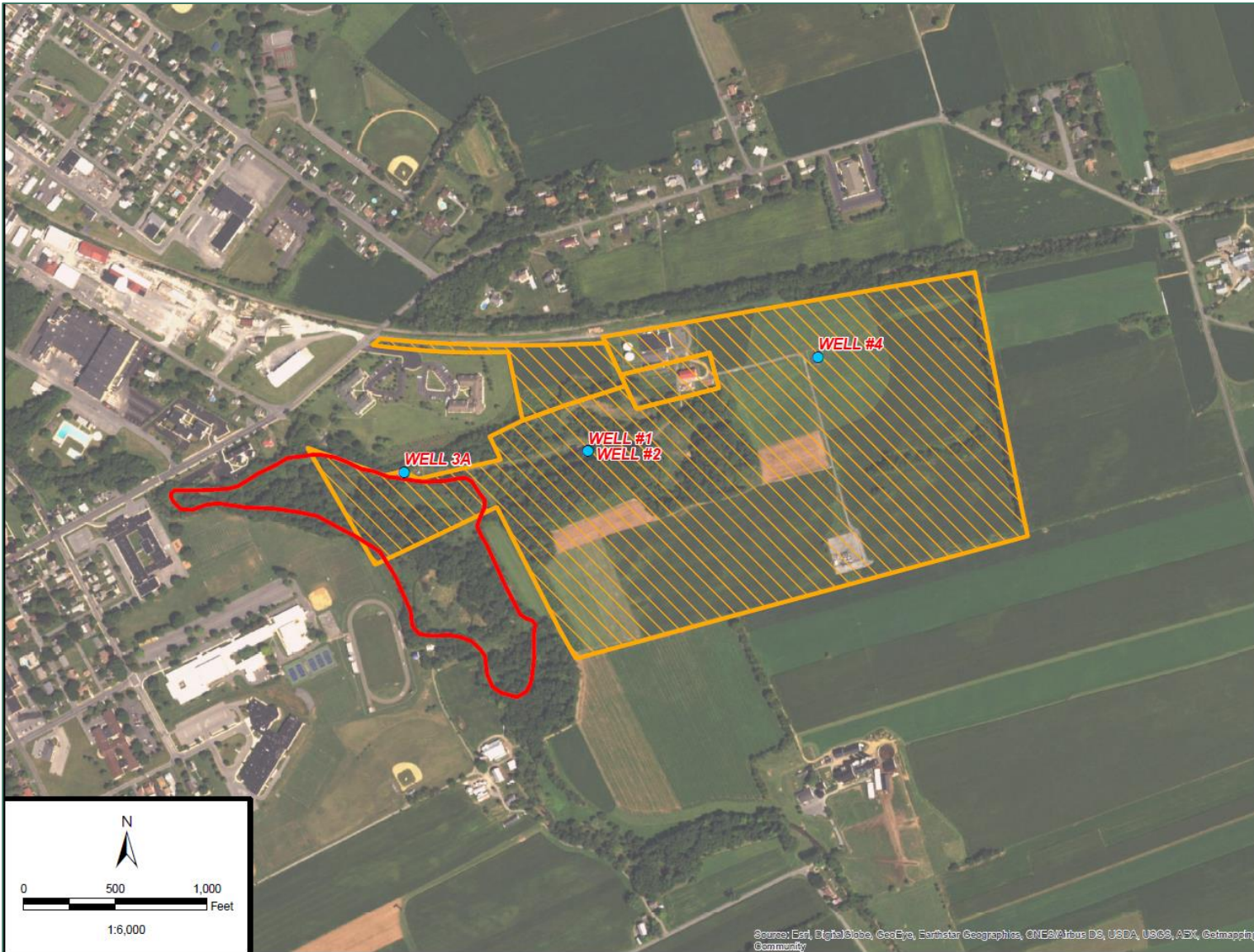


Figure 5
Kutztown Borough Farm
Saucony Creek Watershed
Berks County, PA

- Kutztown Borough Water Well
- Kutztown Borough Farm
- Saucony Marsh & Associated Wetlands

Data Source:
 Boro Farm, SSM, 2016

SSM
 SSM GROUP, INC.

Engineering and Environmental Services
 Reading | Lehigh Valley | Central Pennsylvania
 P. 610.621.2000 F. 610.621.2001
 ssmgroup.com

12/20/16

N

0 500 1,000
 Feet

1:6,000

Source: Esri, DigitalGlobe, GeoEye, Earthstar Geographics, CNES/Airbus DS, USDA, USGS, AeroX, Getmapping, Aergrid, IGN, IGP, swisstopo, and the GIS User Community



Safe Drinking Water Starts at the Source!

Restoration Strategy



Saucony Creek Project Timeline

2002-2006:
15,280 feet of
stream bank
fencing
installed

2004-2007:
Kutztown &
RAWA
develop
Source Water
Protection
Plans

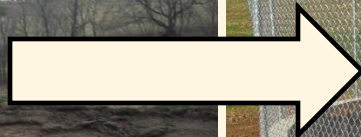
2008-2014:
184,700 lbs of
nitrogen
managed on
farms

2003:
*Schuylkill
Action
Network*
formed

2008-2010:
Restoration
on Borough
of
Kutztown's
farm

2014-2016:
270,000 lbs
of nitrogen
managed on
farms

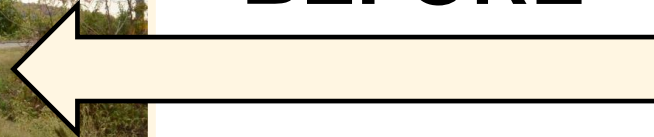
***Numerous projects were implemented over this time period. These are only a few highlights.**



Zimmerman Farm



BEFORE



AFTER

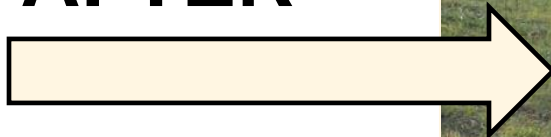
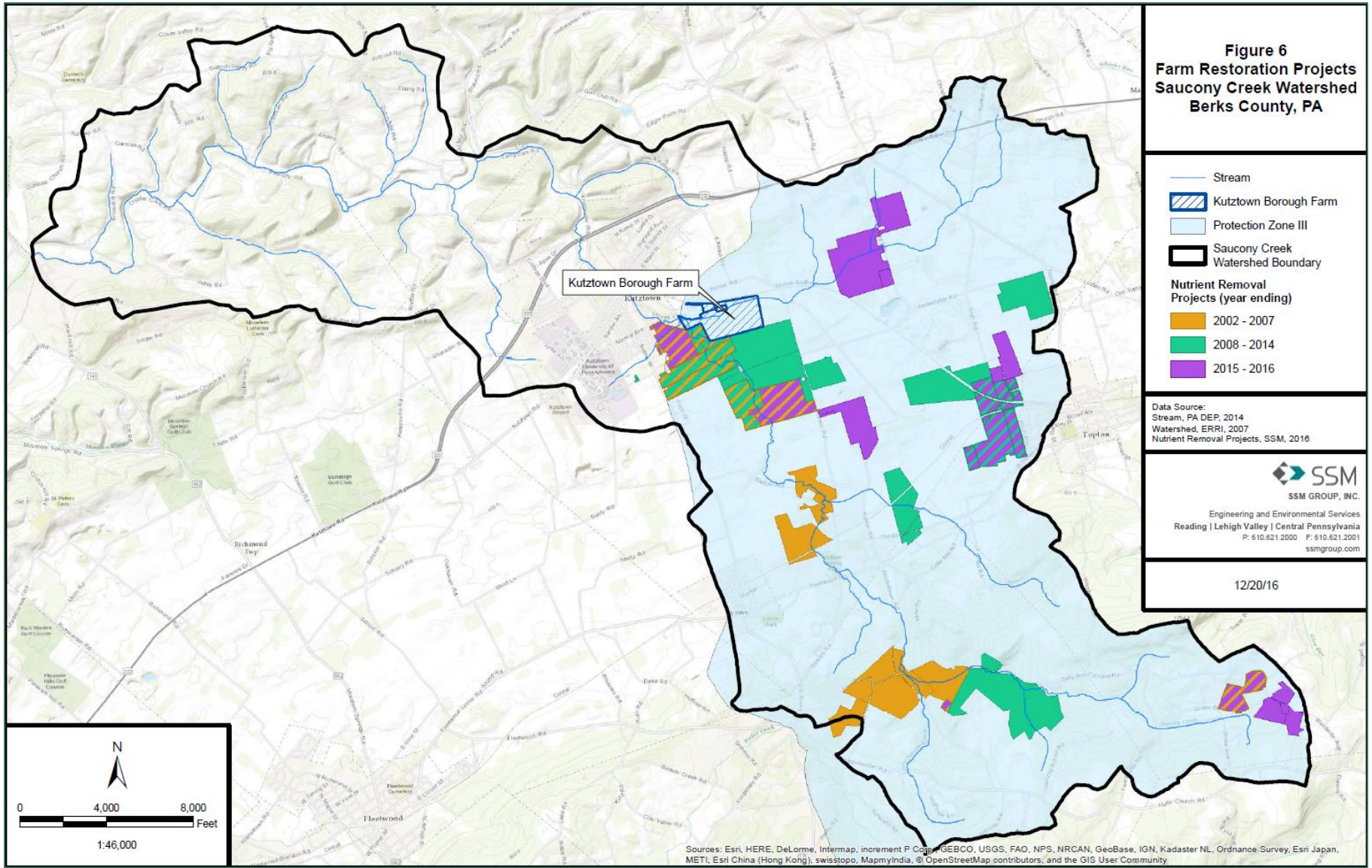


Figure 6
Farm Restoration Projects
Saucony Creek Watershed
Berks County, PA



Major Funding Partners



Delaware River Restoration Program



Leveraging Funding



*Berks Watershed
Restoration Fund*



*Schuylkill River
Restoration Fund*

Project Partners:



Special Thanks to Other Supporters:

READING AREA WATER AUTHORITY · KUTZTOWN BOROUGH · WESTERN BERKS WATER AUTHORITY · TULPEHOCKEN CHAPTER, TROUT UNLIMITED · BERKS COUNTY CONSERVATION DISTRICT · PA. DEPT. OF ENVIRONMENTAL PROTECTION · PA. DEPT. OF CONSERVATION & NATURAL RESOURCES · SCHUYLKILL ACTION NETWORK · BERKS COUNTY DEPT. OF AGRICULTURE · KUTZTOWN UNIVERSITY · MAIDEN CREEK WATERSHED ASSOCIATION · FRIENDS OF THE SAUCONY CREEK MARSH ·

Support For the Environment

The *Schuylkill Action Network* teamed with the Saucony Creek Brewing Company to develop a new brand that told the Source Water Protection message.

Some proceeds support the Berks Watershed Restoration Fund, administered by Berks Nature.

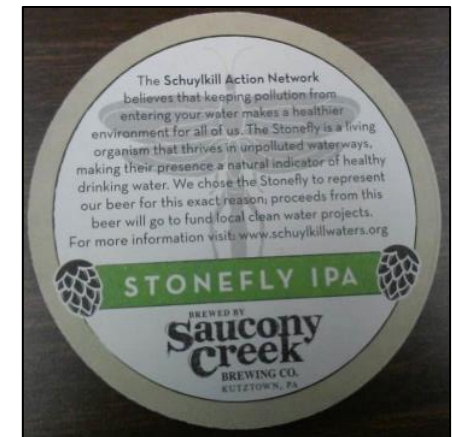


Figure 7
Nitrate Concentration
Saucony Creek Watershed
Berks County, PA

Data Source:
 Graph, SSM, 2016



12/06/16

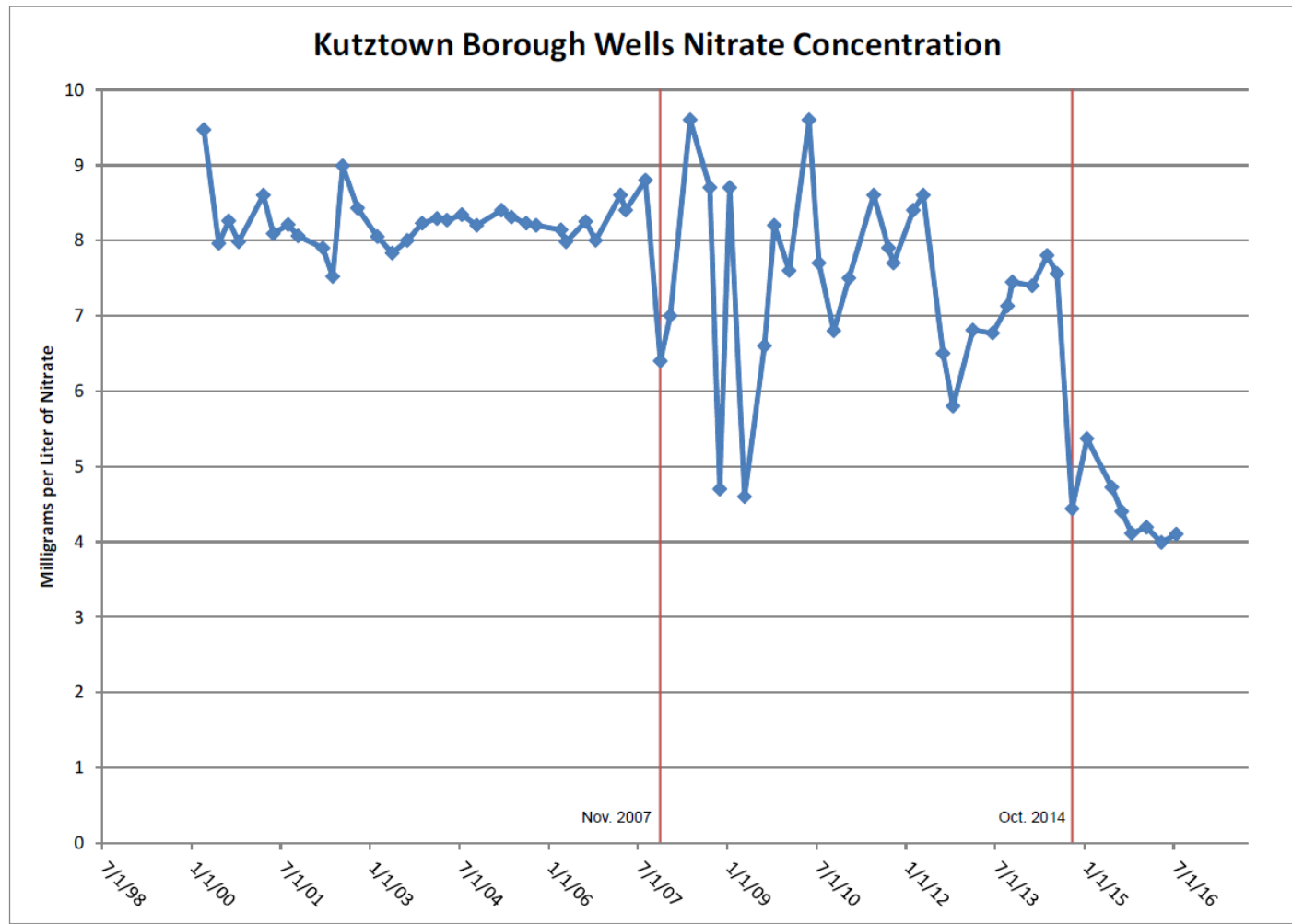


Figure 8
High and Low
Nitrate Concentration
Saucony Creek Watershed
Berks County, PA

Data Source:
 Graph, SSM, 2016



Engineering and Environmental Services
 Reading | Lehigh Valley | Central Pennsylvania
 P: 610.621.2000 F: 610.621.2001
 ssmgroup.com

12/05/16

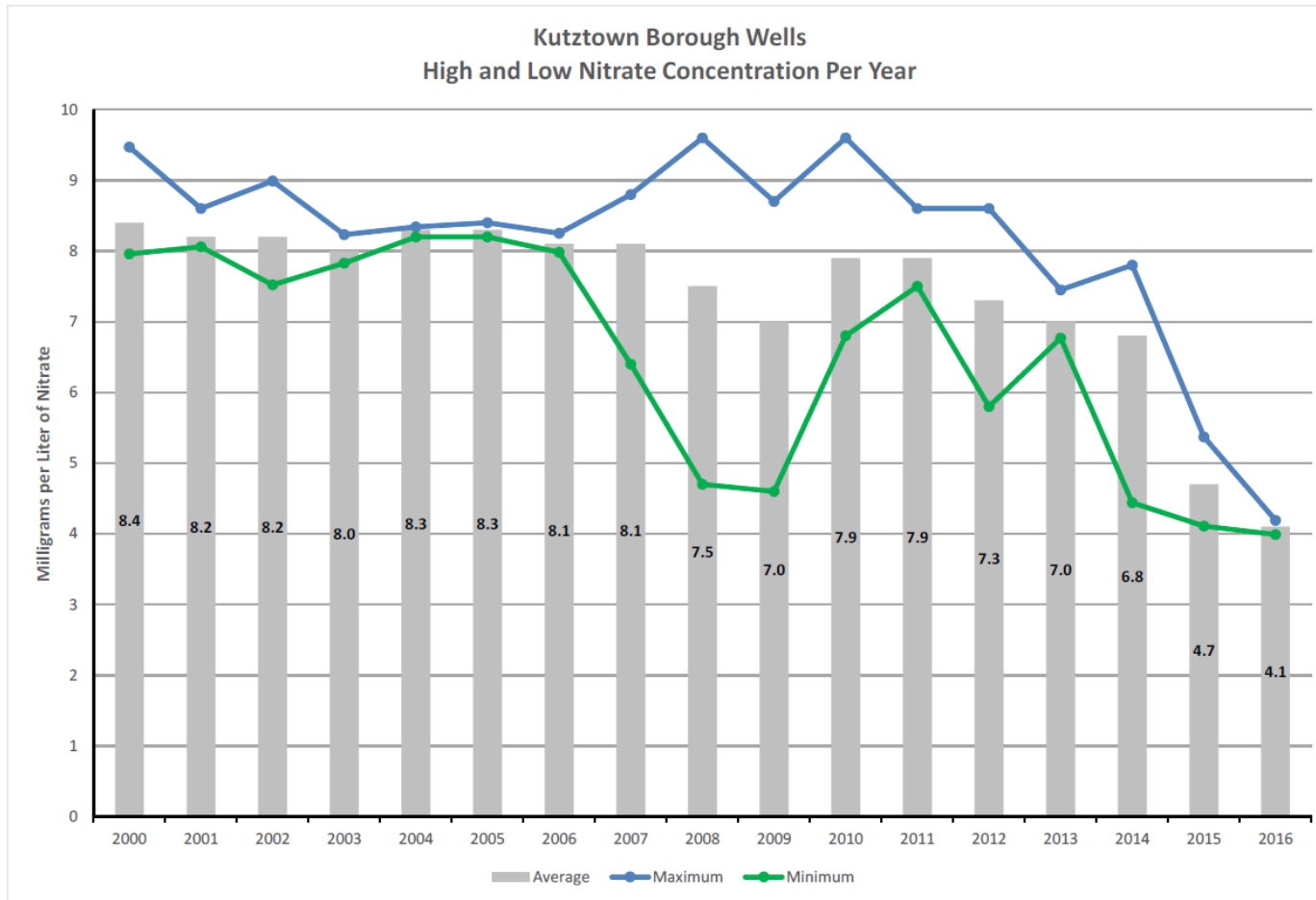
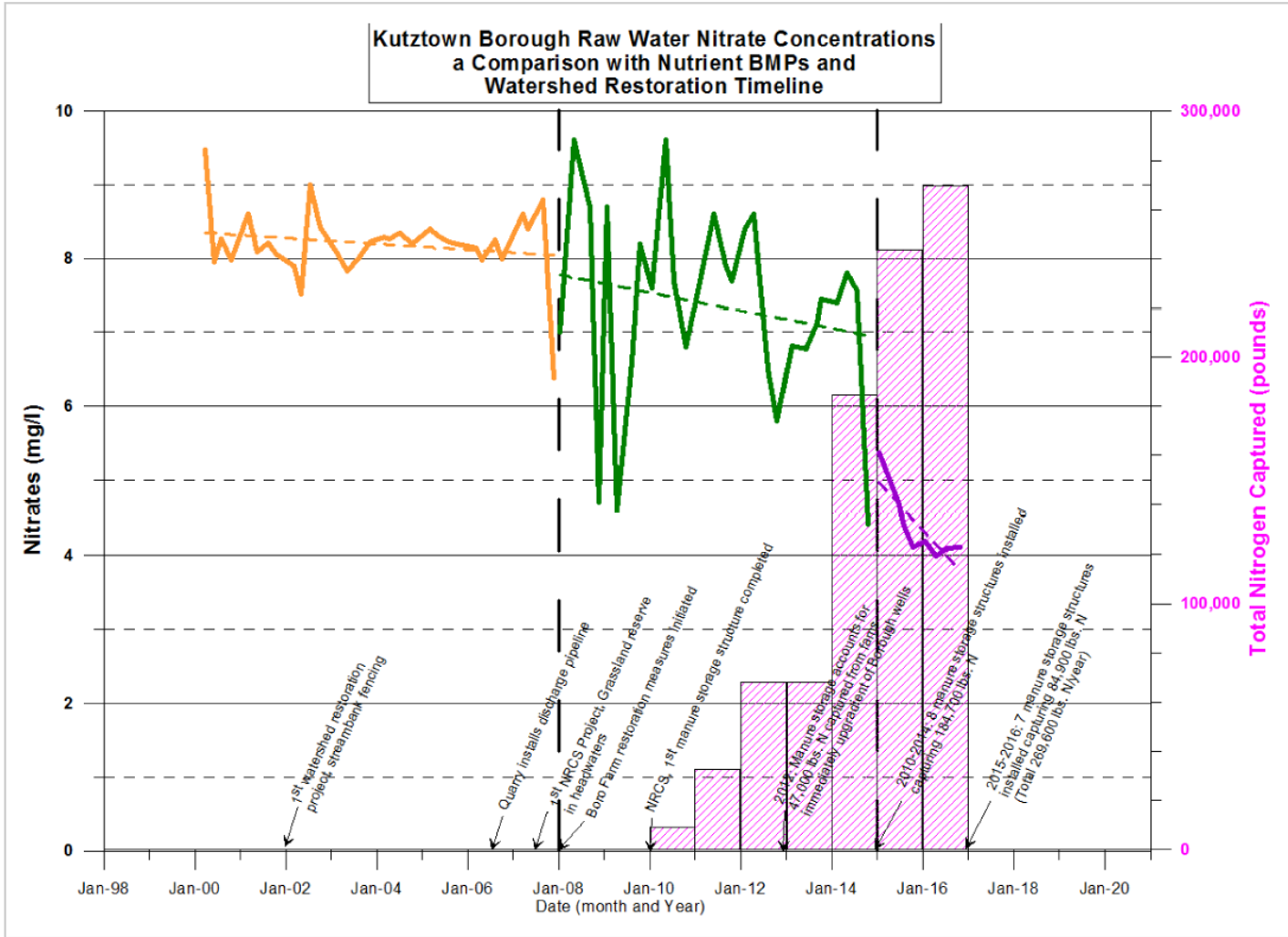


Figure 9
Nitrate Concentrations and Watershed Restoration
Saucony Creek Watershed
Berks County, PA



Data Source:
Graph, SSM, 2016



12/20/16



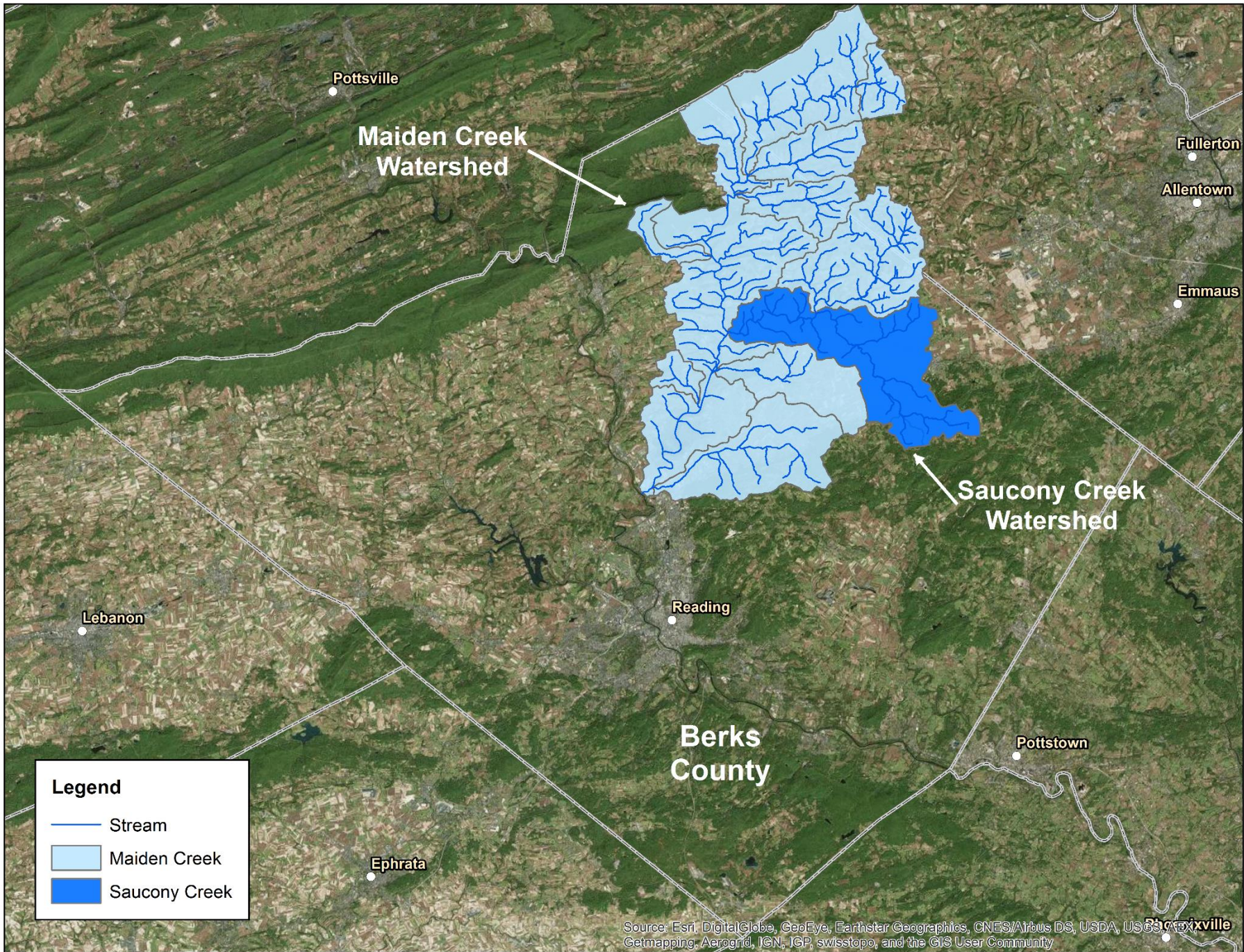


BMPs Work!



Investing in Source Water Protection







Eric Grindrod, P.G.

Spotts, Stevens and McCoy

610- 621-2000

eric.grindrod@ssmgroup.com

Safe Drinking Water Begins at the Source

